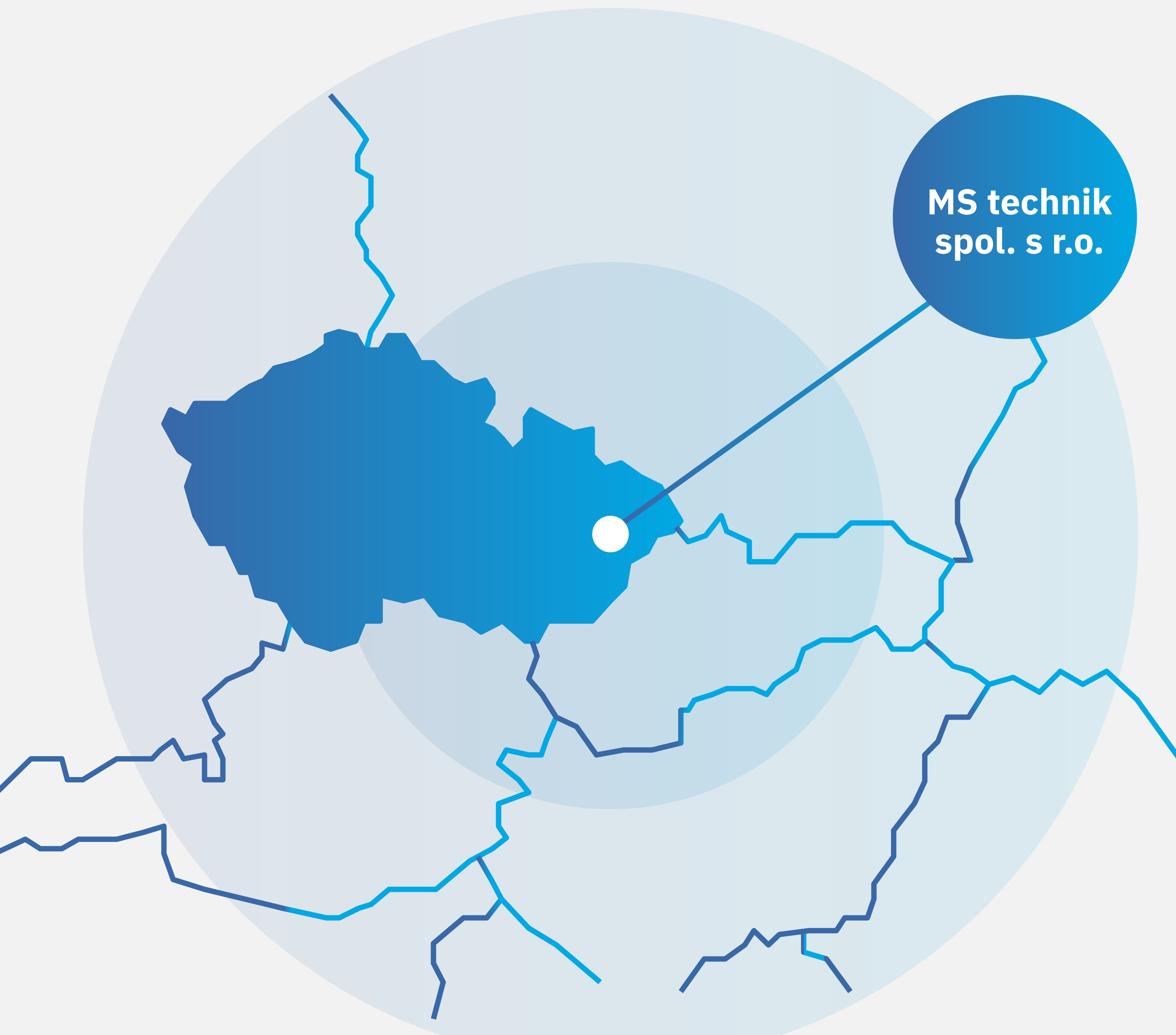




MS technik spol. s r.o.
Location Šenov u Nového Jičína

MS technik spol. s r.o.
Dukelská 114
Šenov u Nového Jičína 742 42
Czech Republic

Location of MS technik s.r.o.



About us

MS technik is the Czech company, being active in the field of tool production, metal stamping and galvanizing. The company offers a broad range of services to satisfy the customers needs from all industrial branches.

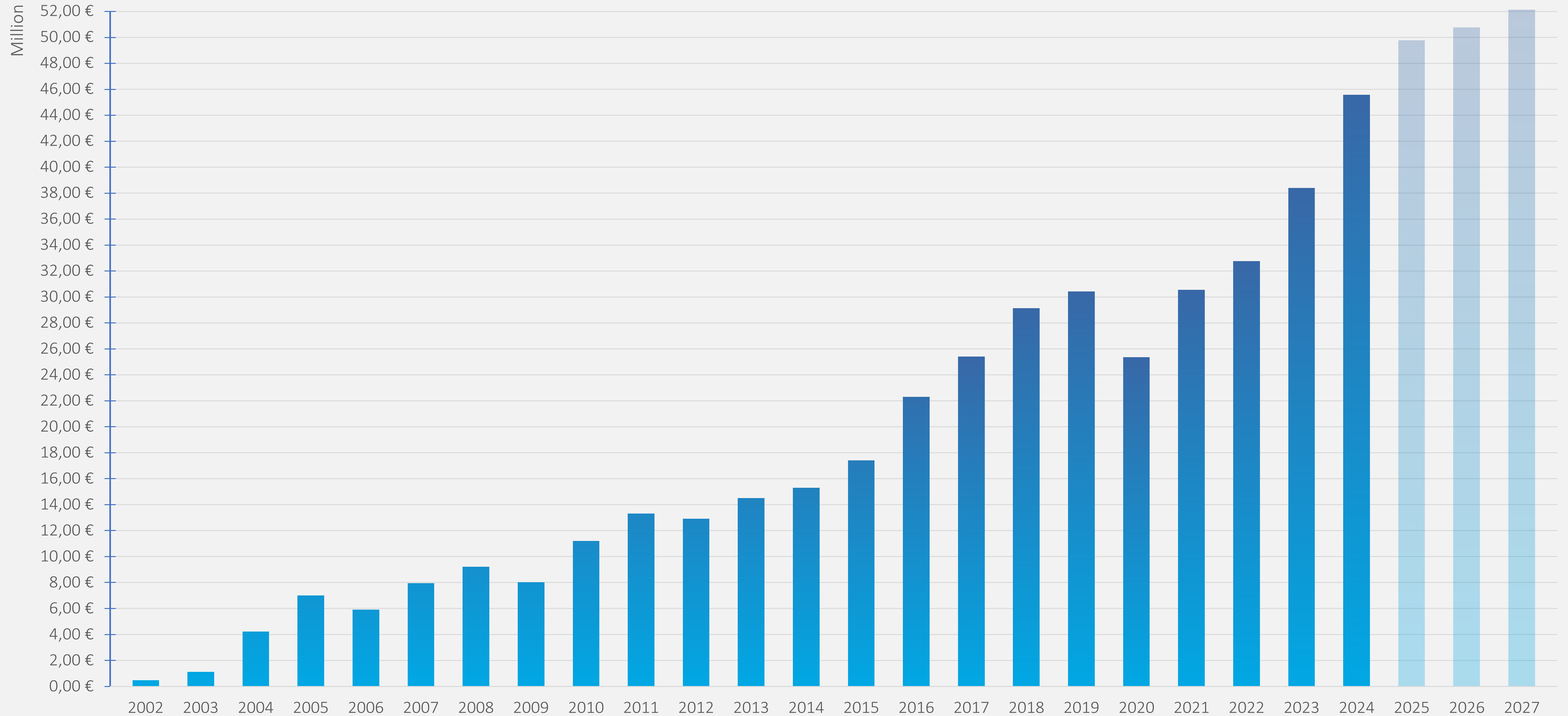


Company milestones

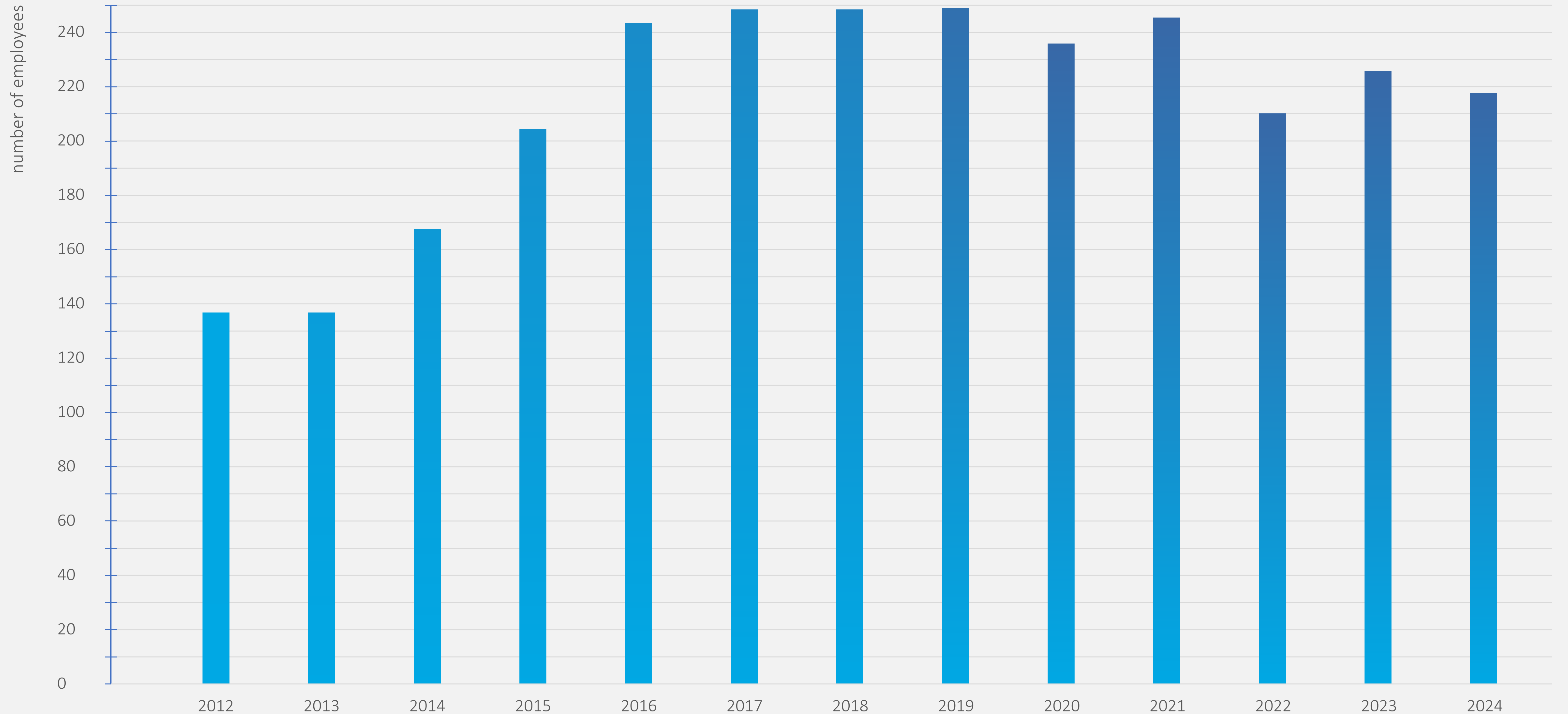


- 2001 Foundation of MS technik in Novy Jicin, focusing on the production of pressed and welded parts, especially for the automotive industry.
- 2003 Certification of ISO TS 16949.
- 2004 Expansion of a new galvanizing facility in Roznov pod Radhostem. The company now offers metal finishing options, including tumbling and industrial washing.
- 2007 The development of company. Foundation of Tool shop and production of pressing tools, checking and welding fixtures.
- 2011 Extension of services - robotic welding.
- 2013 Introduction of warehouse system and advanced planning system.
- 2015 New galvanic line Zn/Ni
- 2017 New progressive press machine 800 t
- 2018 Certification of ISO IATF 16949
- 2020 Production shop enlargement / Progressive press KAISER 630 with TRANSFER
- 2021 Galvanizing plant - reconstruction of the suspension lines Fe-Zn
- 2023 New progressive press machine 1 000 t
- 2024 New progressive press machine 600 t

Turnover progress



Overview of the number of employees



Production technology

Tooling

Pressing

- Automatic press machines with automatic feeding
- Eccentric and crank presses with manual feeding

Welding

- Spot resistance welding
- welding by TIG and MIG/MAG methods
- robotic welding

Riveting

- Rotating riveting machine

Metal galvanizing Fe/ZnFe & Zn/Ni

- Drum or suspension lines
- Iron parts suspension and mass galvanizing
- Chromate treatment in yellow, blue, black colors
- passivation

Others

- Degreasing, tumbling, grinding, milling, drilling



Pressing equipment in Šenov u N.J.



Progressive press SIMPAC 1 000 t with transfer	1x
Progressive press SIMPAC 800 t	1x
Progressive press KAISER 630 t with transfer	1x
Progressive press SIMPAC 600 t	1x
Progressive press PME 425 t	1x
Progressive press KAISER 400 t	1x
Progressive press ARISA 400 t	1x
Progressive press PKZZ 315 t	1x
Progressive press KAISER 250 t	1x
Progressive press LEK 250 t	1x
Progressive press WEINGARTEN 200 t	1x
Manual press LUD 500 t	1x
Manual press LKT 250 t	2x
Manual press LEK 160 t	1x
Manual press LEU 100 t	1x
Hydraulic testing press LUIGART 500 t	1x



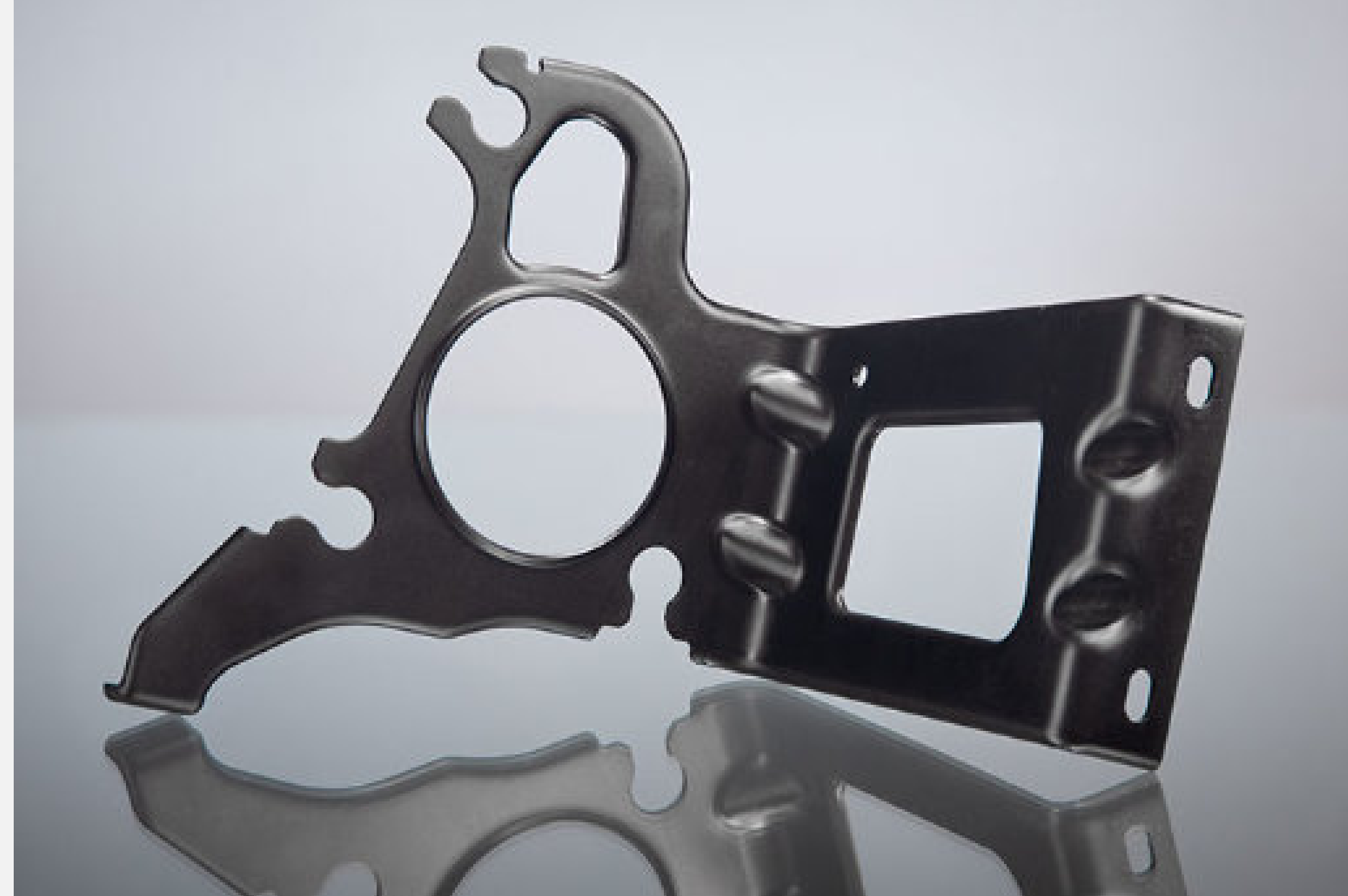
Stamping



Progressive and hand-die
stamping of steel and
stainless steel materials
thickness 0.6 to 5 mm



Stamping



Progressive and hand-die
stamping of steel and
stainless steel materials
thickness 0.6 to 5 mm

Stamping

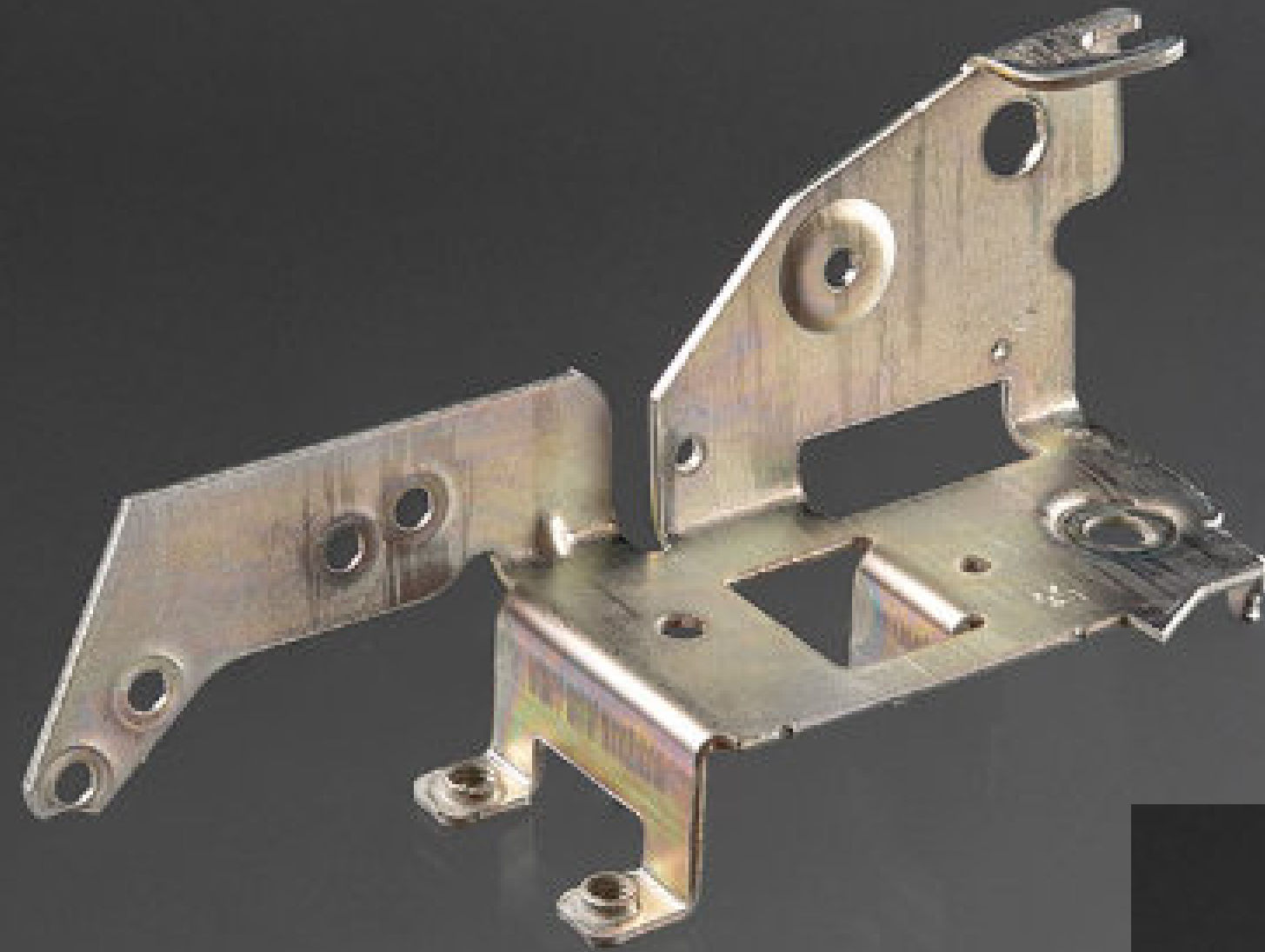


Progressive and hand-die
stamping of steel and
stainless steel materials
thickness 0.6 to 5 mm

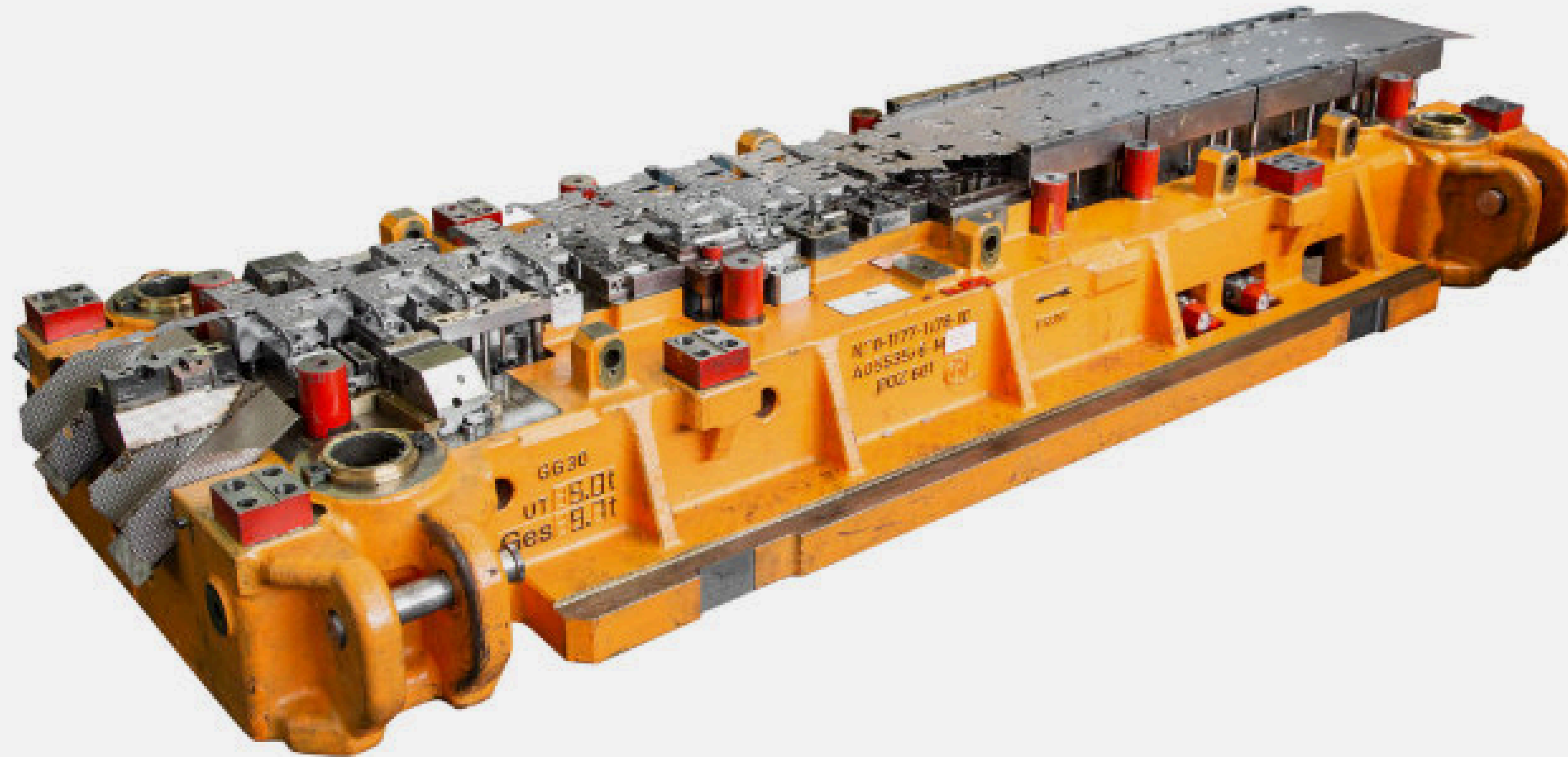


Stamping

Progressive and hand-die
stamping of steel and
stainless steel materials
thickness 0.6 to 5 mm



Tool shop



- Focused on the production of press tools for cold sheet metal works and we also offer production of welding, assembling and checking fixtures.
- Production of transfer tools
- Tools are designed up to max. weight of 20t and the length of 4.0 m.
- We use 3D and the scanner measurement for tool parts. This help us in optimalisation.
- The tool shop has its own design department which specializes in 3D design and is supported by the most advanced CAD and CAM software (SOLIDWORKS, Power Mill, Logo Press).

Tool shop

MS **technik**



Tool shop

MS technik



Welding process

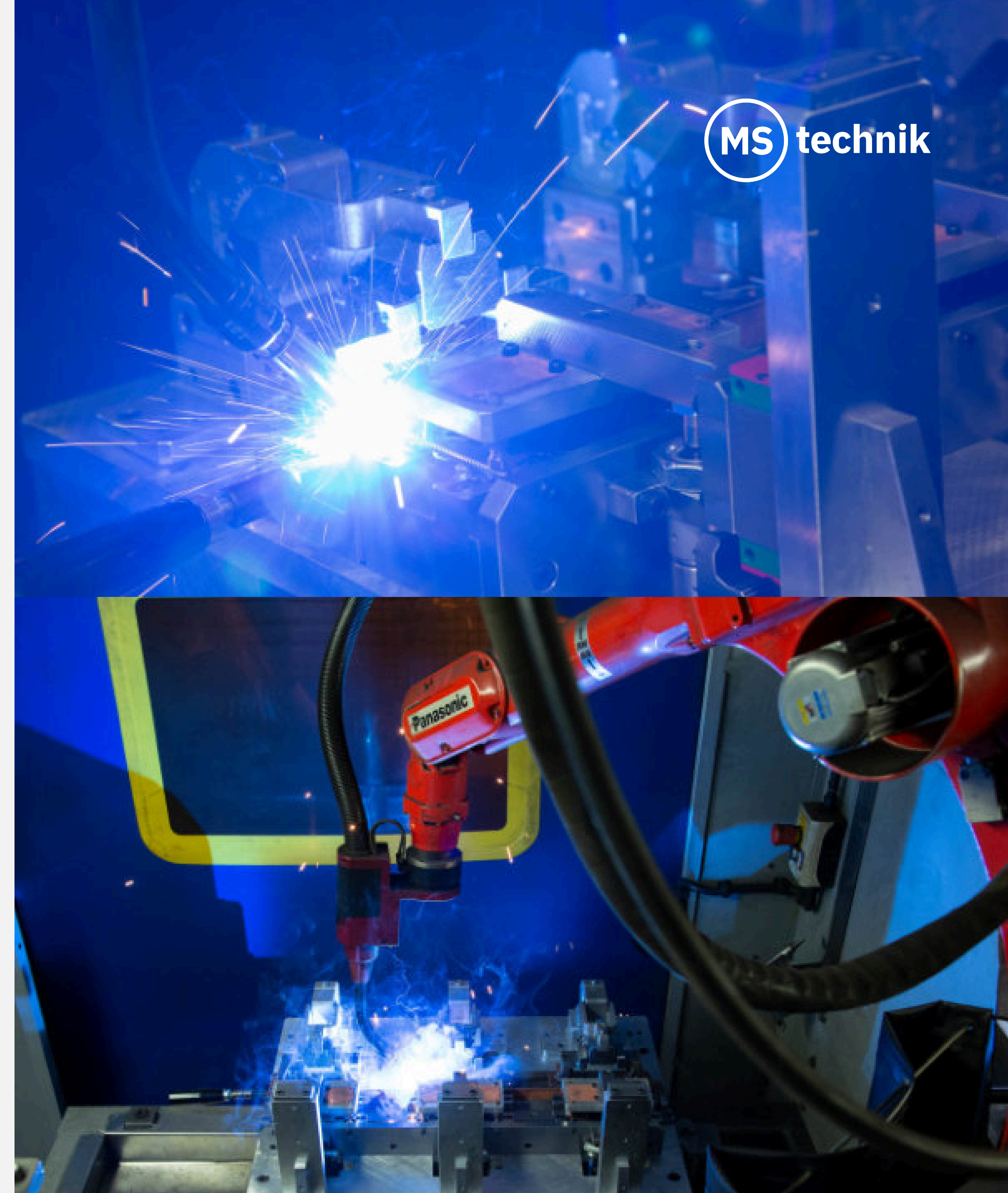


Technology :

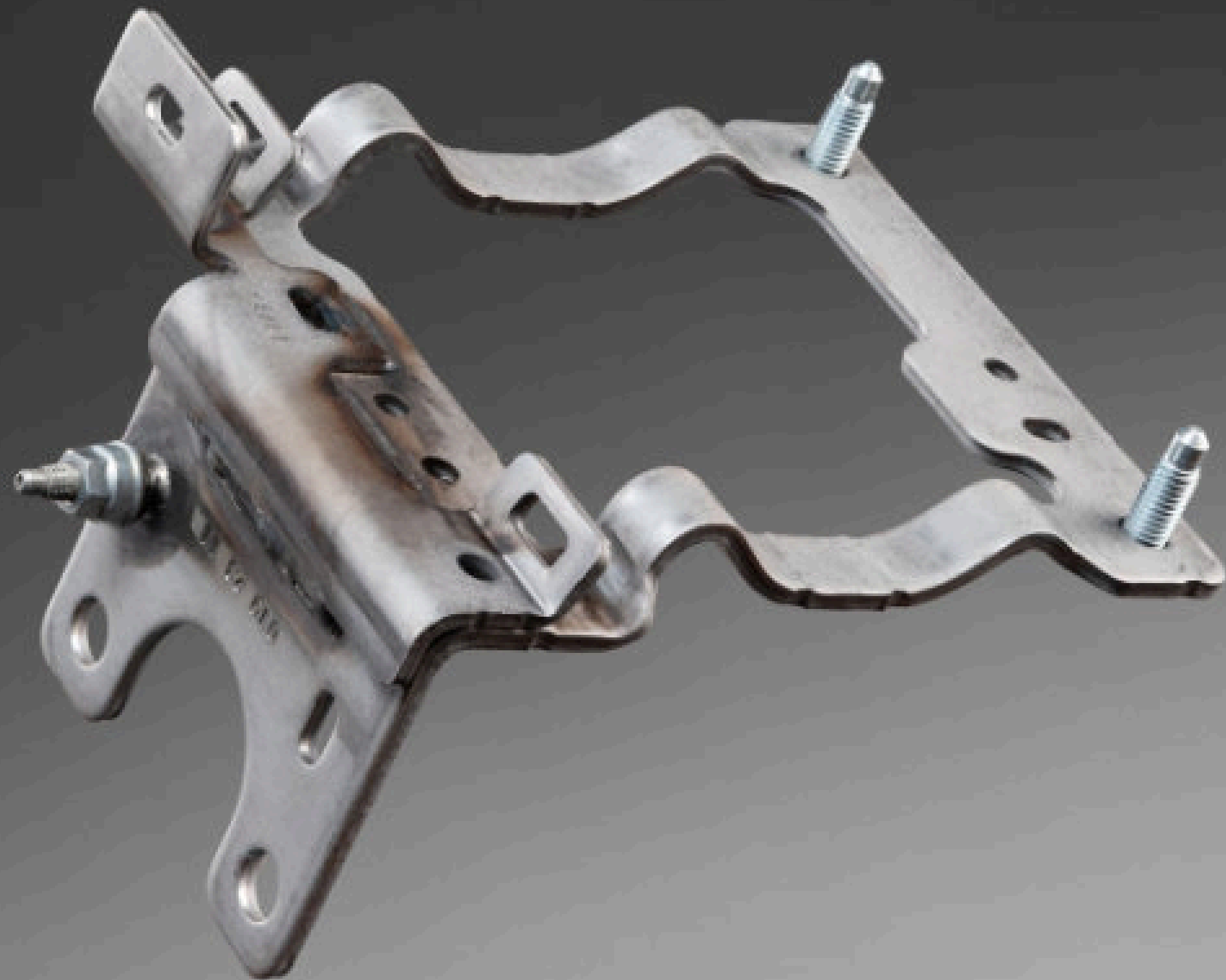
- robotic welding
- spot welding
- manual welding

Machines:

Welding robot Motoman UP6	1x
Welding robot Motoman MA	1x
Welding robot Motoman	2x
Welding robot Panasonic	1x



Welding process



Welding process



Welding process



Welding process



Assembly line of seats and speakers





MS technik spol. s r.o.
Location Rožnov pod Radhoštěm

MS technik spol. s r.o.
Sklářská 2592
756 61 Rožnov p. Radhoštěm
Czech Republic

Galvanizing shop



We apply zinc coatings three different ways.

- galvanisation with suspension and bulk technology (Fe/Zn 5-25 μm – thick-film passivation, blue passivation without Cr6+ without sealing, with sealing).
- suspension galvanisation (Fe/Zn 5-25 μm – black passivation without Cr6+, with or without sealing).
- suspension alloyed galvanisation, zinc-nickel (Fe/ZnNi 5-20 μm – transparent and black passivation, with sealing).

The dimensions of our suspension technology are 1600 x 600 x 800 mm (l x w x h). The maximum dimensions of suspended galvanised parts are 1300 x 270 x 800 mm.

Galvanizing shop

MS technik



Galvanizing shop



Galvanizing shop



Other services

Insert Moulding

MS technik is able to offer a wide range of insert moulding in cooperation with our partners

The overmoulding of metal inserts has a huge range of applications such as:

- Soft touch feel/ grip
- Improved weight ratio of parts
- Improved component strength or rigidity



Measuring equipment



- Test machine for determining the strength of the material
- 3D Automatic machine ZEISS Conture RDS (X-700 mm, Y-1000 mm, Z-600)
- 3D Automatic machine ZEISS C700 (X-700 mm, Y-1000 mm, Z-550 mm)
- Microscope SZ 61 with video camera incl. accessories (control section of the weld)
- Digital device for measuring the coating layers
- 3D Scanner Zeiss measurement machine



**3D Scanner Zeiss
LED2 Comet
standard,
measuring range
250 mm, 500 mm**

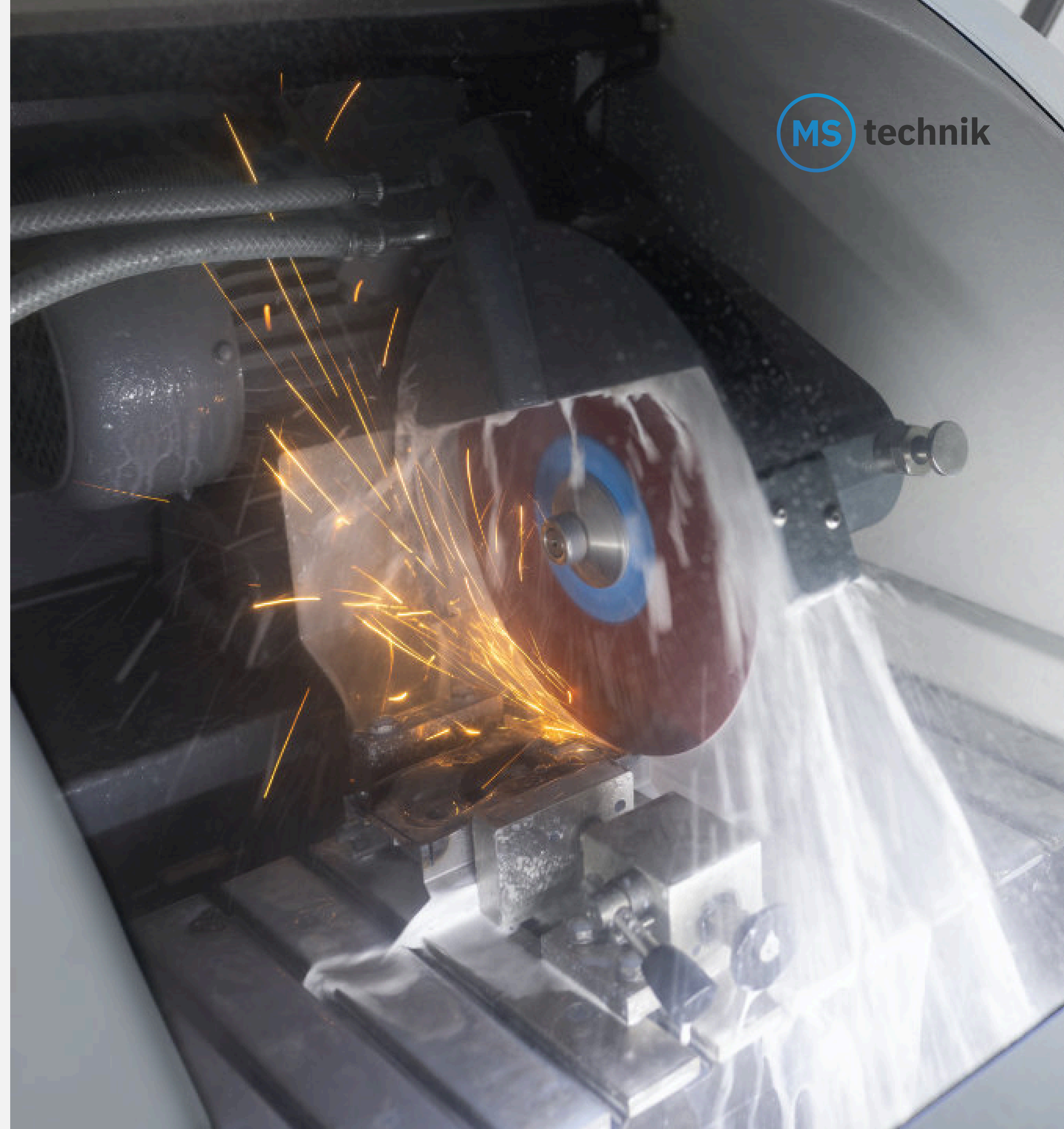


MS technik

3D Automatic machine ZEISS Contura RDS (X-700 mm, Y-1000 mm, Z-600



**Automatic cutting
device Struers
Discotom-100
(semi-automatic wet
abrasive cutting)**



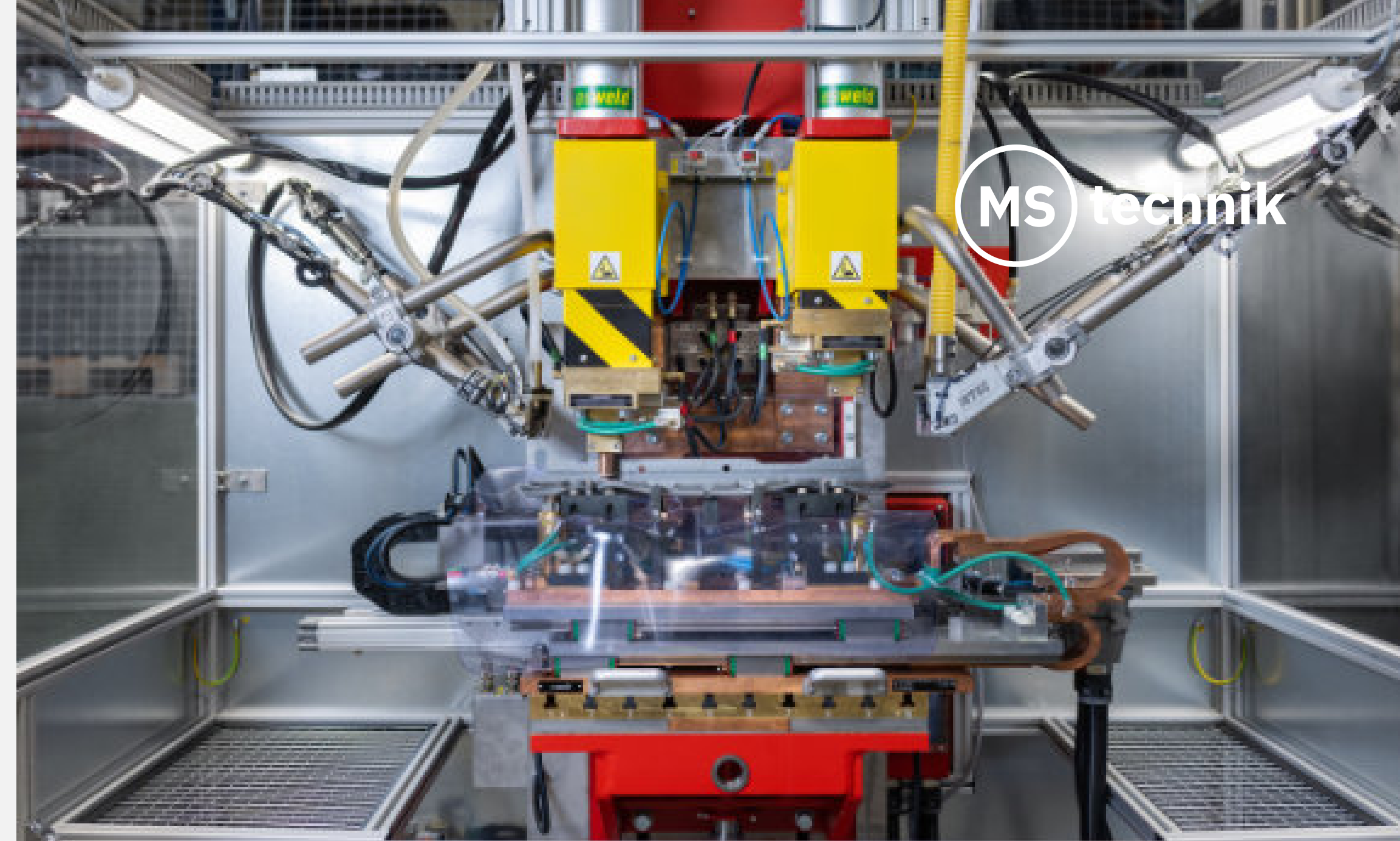
Grinder Struers LaboPol 5 (Disc grinding and polishing machine)

MS technik



Realized investments in 2015 - 2024:

- Progressive press Simpac 800t
- Welding robots
- Advanced planning system
- Enlargement of Warehouse, management system incl. shelving system
- Modernization of galvanizing suspension lines Fe/Zn
- New suspension line Zn/Ni in galvanizing plant
- New milling machine in tool shop
- Enlargement of production shop
- Progressive press PME 400t
- Progressive press KAISER 630t TRANSFER
- Galvanizing plant - reconstruction of the suspension lines Fe-Zn
- Progressive press 1000t with transfer
- Progressive press SIMPAC 600t
- Expansion of production and storage capacities in Nový Jičín - CTPark



New investments in plan for 2025 - 2026:

- New drum and suspension production line at a new galvanizing plant in Nový Jičín – CTPark
- Investments to robotization and automation
- Investment in pressing capacity
- Expansion of production and storage capacities

Why do we think that MS technik could be a reliable partner for its customer?

- We offer the design and production of tools
- We offer the stamping parts, welding and galvanizing all in one
- We have experienced and skilled people. We are able to solve the various challenges that our customers have
- We have the potential to grow (technology and capacity)
- We are not a big company but we are a growing company and we offer our partners the cost advantage
- The automotive industry is not an easy market but we do believe that we will manage it together